



RHYL & DISTRICT MOTOR CLUB



# Tir Mostyn

## Autotest / PCA

Sunday 11<sup>th</sup> November 2018

A round of the ANWCC & WAMC Championships

Sponsored by D Lawlor Crane Hire

## FINAL INSTRUCTIONS

Rhyl & District Motor Club would like to thank you for your entry and wish you a successful and enjoyable days MOTORSPORT.

**Permits** The events have received their permits which are

Nat B Autotest **109487**

Clubmans PCA **109488**

**Officials Add**

Club Steward **Keith Gush**

Noise Check Marshal **Arthur Jones**

Scrutineers **Steven Woods & Stephen Edwards**

**Programme**

Noise Check, Scrutineering and Signing On **Opens 08.30 hours**

Noise Check, Scrutineering and Signing On **Closes 10.00 hours**

Any competitor not signed on by **10.00 hours** may be classed as a non-starter.

Drivers may not swap cars or passengers after signing on

You will collect your process card at the Noise Check, then from Noise Check proceed to Scrutineering and Signing on.

Note if you have not fully completed an entry form and declaration this **MUST** be completed before arriving at Signing On

They are located on the RDMC website

Drivers Briefing (All Drivers must attend) **10.00 hours**

First car starts tests at **10.15 hours**

**Note as it is Armistice Day a 2-minute silence will take place at 11.00 hours. Tests will cease running just before 11.00 and the two-minute silence will commence and finish with a whistle**

**Tests**

We will be running **Six** tests over **Two** test sites where you should get the opportunity to have three runs at each. Subject to time and conditions on the day we may consider changing the format.

An announcement will be made by the Clerk of Course at the latest in the lunch break

Hard copies of all tests will be included in competitors' packs but will also be published on website with these final regulations.

A flag signalling system will be used: -

- **Red flag is for a hazard on the test** – you must stop immediately and a re-run will be allowed.

Timing on tests will start when you cross the start line and finish when you stop astride the finish line

Timing will be to 1/10 second by hand held chronometers

Time will be allowed to walk the tests before the first tests commence and lunch time. An allowance of 10 minutes will be allowed between test changes. A whistle will indicate the test area is to be cleared immediately to allow tests to start

PCA competitors must ensure that their passenger window is fully closed and seat belts are worn by the driver and passenger.

**Site Environment** All litter must be placed in the bin sacks located around the site. You are also supplied with a carrier bag to place your litter in and take home please.

Any oil spillage must be reported to a named event official

There will be a portable toilet located on site

There will be a catering van on site all day serving hot food and drinks. Please support them as we are hoping to use them again in the future.

Being a port there are restricted areas which **must be observed**

**Site Location** The site is located on the on the A548 Coast Road between Greenfield and Ffynnongroyw. Turn right at the traffic lights if travelling from Greenfield; or left if travelling from Ffynnongroyw, over the railway bridge and follow the road around as per the site map. The route in will be arrowed from the traffic lights off the A548

**Event Evaluation** We wish all competitors a good days' motorsport and once again we thank you for your support. You will find included in your starter pack an event evaluation questionnaire and we hope you will spend a few minutes completing it. We always want to improve our events and you as competitors are the best placed to provide us with the information we need to continually improve.

**We must remind all in attendance that this is an operational port and restricted areas must be strictly adhered to in all times**

## WHY NOT JOIN RHYL & DISTRICT MOTOR CLUB TODAY

Single Membership £10 Joint Membership £15 Family Membership £20

Get details and membership form at

[www.rhyldmc.co.uk](http://www.rhyldmc.co.uk)

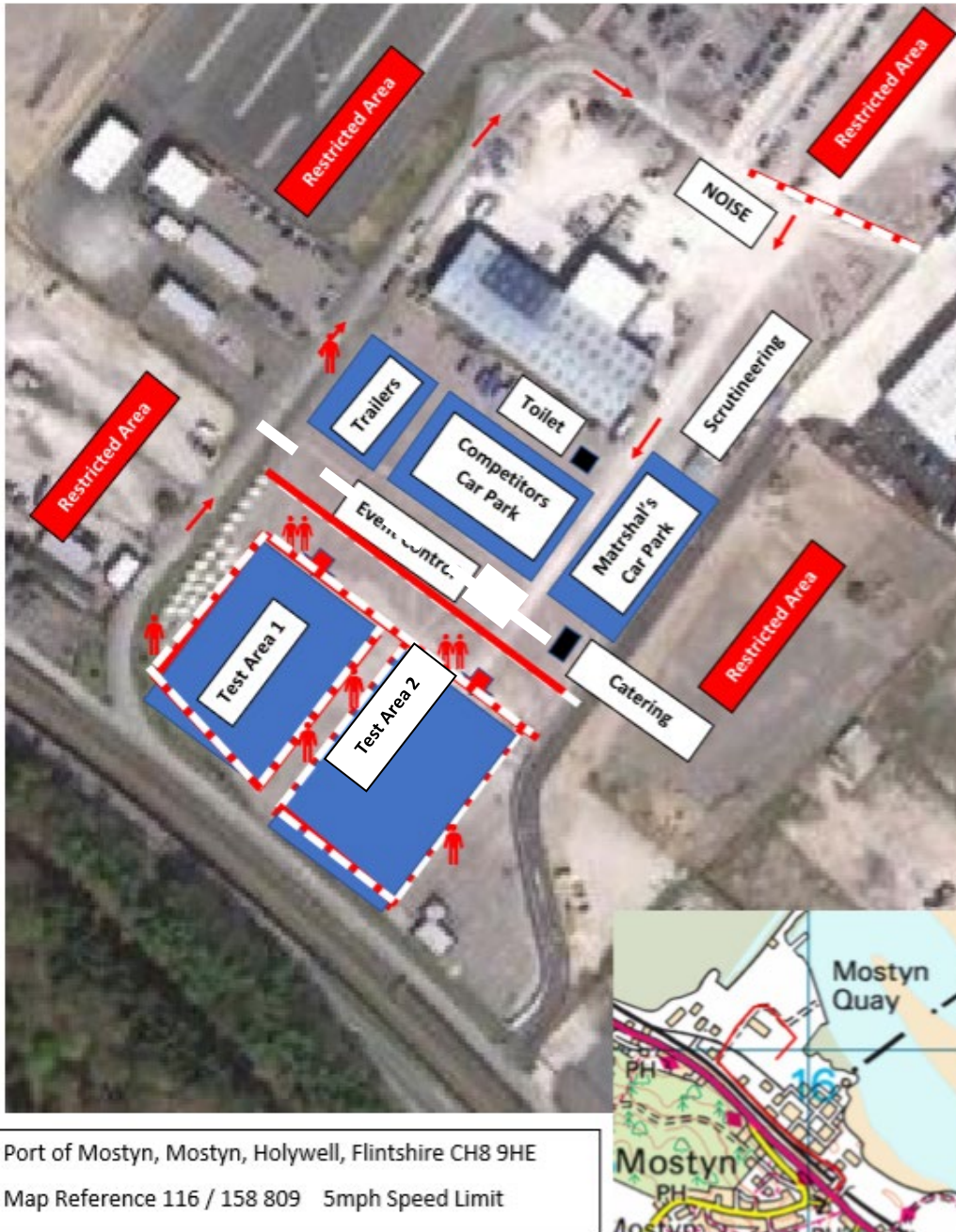
**Your membership will last to the 31<sup>st</sup> December 2019**

**MEMBERSHIP FORMS WILL BE IN YOUR PACKS**

**RDMC AUTOTEST / PCA CHAMPIONSHIP 2019 EVENT DATES**

**13 January – 28 April – 22 September – 17 November**

# TIR MOSTYN AUTOTEST / PCA



**HELP THE SPORT BY SUPPORTING THE REGIONAL CHAMPIONSHIPS**



**ASSOCIATION OF NORTH-WESTERN CAR CLUBS**  
[www.anwcc.org](http://www.anwcc.org)  
REGIONAL CHAMPIONSHIPS FOR CLUB COMPETITORS  
(open to members of all ANWCC member clubs)  
**LOG ON TO THE WEBSITE FOR FULL INFORMATION**

SUPPORTED BY

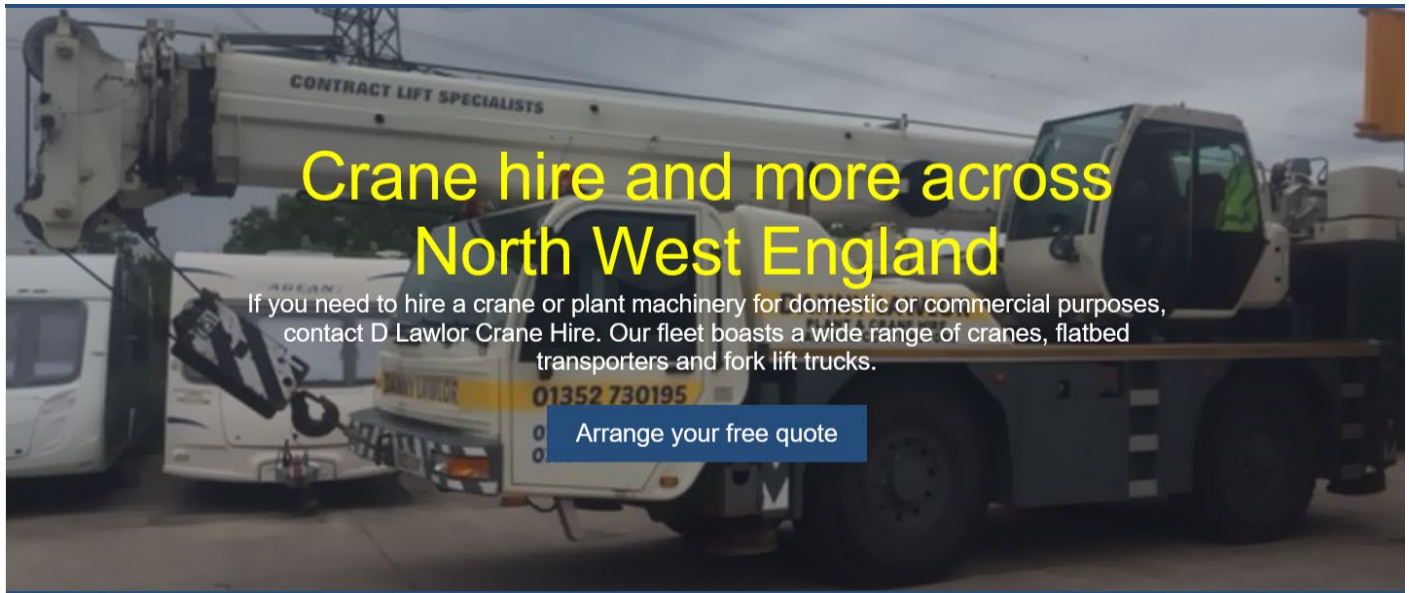
- mintex racing
- motordrive SERVICE | SAFETY | STYLE
- RED FOX PROMOTIONS
- SBARDUN Car Parts & Motorsport Accessories
- Slicks
- FUCHS TITAN RACE

Rhyl & District Motor Club would like to acknowledge the support given to the event by the following



Call us: [01352 730 195](tel:01352730195)

[danny.lawlor@btconnect.com](mailto:danny.lawlor@btconnect.com)



## Crane hire and more across North West England

If you need to hire a crane or plant machinery for domestic or commercial purposes, contact D Lawlor Crane Hire. Our fleet boasts a wide range of cranes, flatbed transporters and fork lift trucks.

Arrange your free quote



### What do we offer?

- [Crane hire](#)
- [Plant machinery hire](#)
- [Flatbed transporter hire](#)
- Risk assessments
- Contract lift and appointed persons



### Where do we serve?

Although we are based in Flintshire, D Lawlor Crane Hire offers services for domestic, commercial and industrial customers across North West England and North Wales, including Manchester, Cheshire and along the coast.



### Why choose us?

- Reputable company
- Fully insured
- Experienced crane operators
- Available 7 days a week
- Competitive prices

Looking for crane operators in Flintshire, Manchester and the rest of North West England and North Wales? Call D Lawlor Crane Hire on [01352 730 195](tel:01352730195) for a free quote

We are grateful to the Port of Mostyn for allowing us to promote this event at their property.



**We must remind all in attendance that this is an operational port and restricted areas must be strictly adhered to in all times**



**St. Kentigern**

HOSPICE & PALLIATIVE CARE CENTRE  
HOSBIS A CHANOLFAN GOFAL

Tel: 01745 585221



**Rhyl and District Motor Club** is proud to be a supporter of the St Kentigern Charity for all the great work it does. We support a charity on an annual basis, but we are raising money on this event specifically for this cause.

We hope in appreciation of the provision of this great venue enabling a great day's motorsport you will consider a small donation to this cause. There will be collection buckets at the venue as well as details of the charities lottery.



**WATERLOOHIRE**  
The No.1 in the No.2 business

Call: [01745 592 001](tel:01745592001) | Email: [info@waterloohire.co.uk](mailto:info@waterloohire.co.uk)

